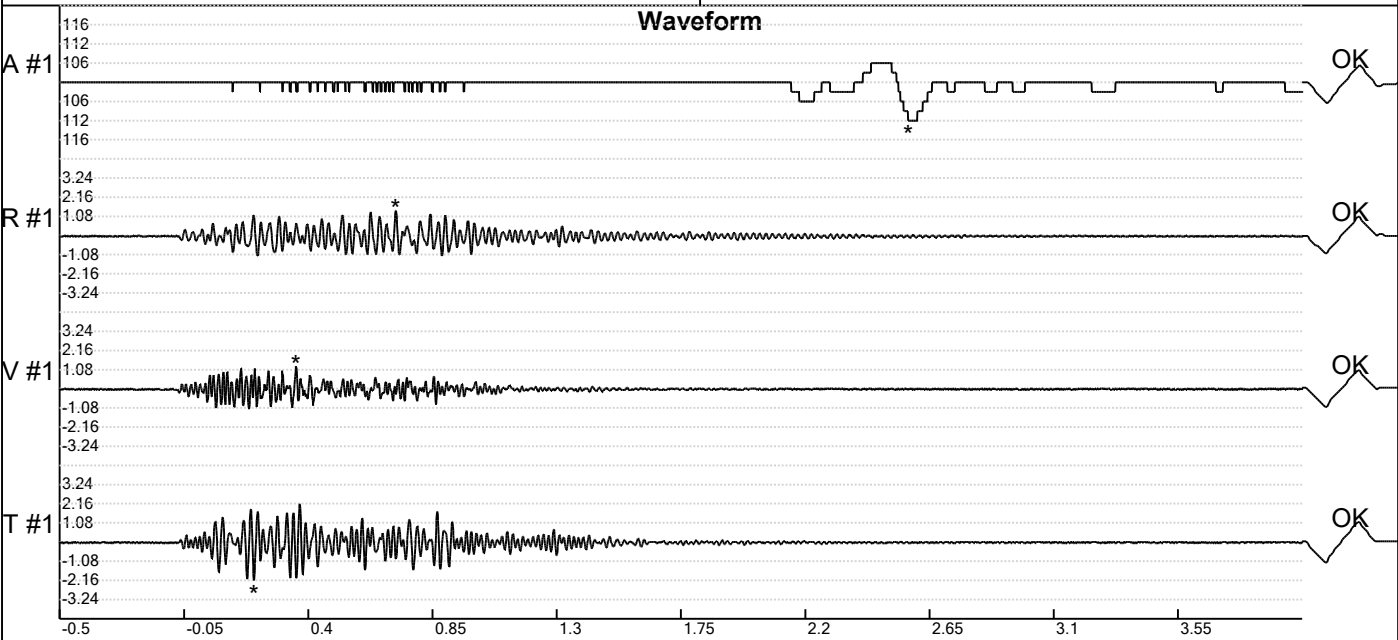


Carrière de BRS  
 Elargissement -5  
 Tir du 22/06/2020  
 Sismographe placé au  
 261 Halleux  
 4710 Comblain-au-Pont

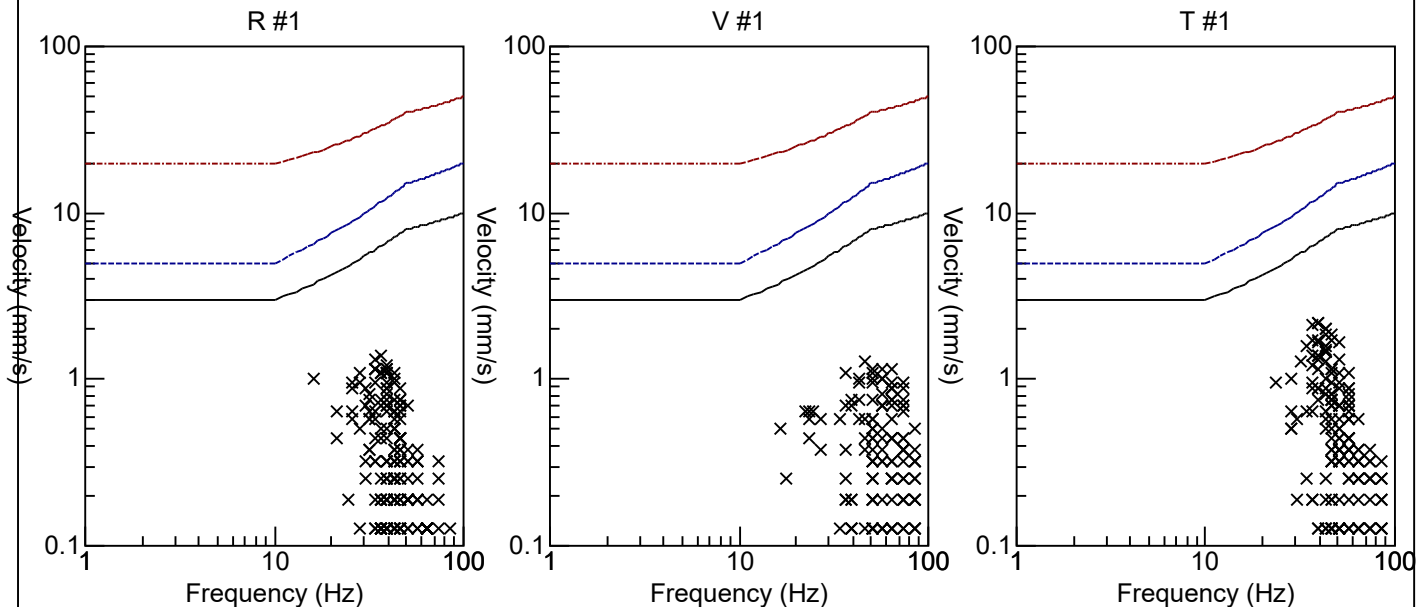
Record: 1789202006221602225.dtb  
 Number: 225  
 Seismograph: Mini-Seis 1789  
 Type of Record: Waveform  
 Date: 22-06-20 16:02:00  
 Duration: 4.50 Seconds  
 Sample Rate: 1024  
 Pre-Trigger: 0.5 Seconds  
 Seismic Trigger: 0.508 mm/s  
 Acoustic Trigger: 142.1 dB  
 Seismic Gain: 63.5  
 Acoustic Gain: 141.9 dB  
 Voltage: 6.7

**Peaks and Frequencies**  
**PPV Maximum (Geo #1): 2.16 mm/s**  
 Acoustic #1: 112.0 dB @ 4.3 Hz (2.572266 s)  
 Radial #1: 1.4 mm/s @ 36.5 Hz (0.7167969 s)  
 Vertical #1: 1.27 mm/s @ 46.5 Hz (0.3554688 s)  
 Transverse #1: 2.16 mm/s @ 39.3 Hz (0.203125 s)

**Graph Information**  
 Time Range: -0.5 s to 4 s, Intervals: 0.4500 Seconds



Velocity vs. Frequency (DIN 4150-3 Tab 1)



Carrière de BRS  
 Elargissement -5  
 Tir du 22/06/2020  
 Sismographe placé au  
 261 Halleux  
 4710 Comblain-au-Pont

Record: 1789202006221602225.dtb  
 Number: 225  
 Seismograph: Mini-Seis 1789  
 Type of Record: Waveform  
 Date: 22-06-20 16:02:00  
 Duration: 4.50 Seconds  
 Sample Rate: 1024  
 Pre-Trigger: 0.5 Seconds  
 Seismic Trigger: 0.508 mm/s  
 Acoustic Trigger: 142.1 dB  
 Seismic Gain: 63.5  
 Acoustic Gain: 141.9 dB  
 Voltage: 6.7

**Peaks and Frequencies**  
**PPV Maximum (Geo #1): 2.16 mm/s**  
 Acoustic #1: 112.0 dB @ 4.3 Hz (2.572266 s)  
 Radial #1: 1.4 mm/s @ 36.5 Hz (0.7167969 s)  
 Vertical #1: 1.27 mm/s @ 46.5 Hz (0.3554688 s)  
 Transverse #1: 2.16 mm/s @ 39.3 Hz (0.203125 s)

**Graph Information**  
 Time Range: -0.5 s to 4 s, Intervals: 0.4500 Seconds

